

Recessed 600x600

# ROVA

## Walk-on Clean Room Luminaire

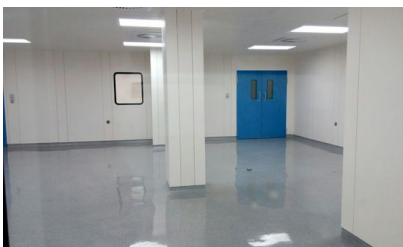
Rova is a heavy-duty clean room luminaire designed for slab ceilings, suitable for walk-on applications. Powder coated sheet steel construction.

- For use in clean rooms up to FS209D Class 1000.
- Toughened glass cover as standard with TP(a) opal liner.
- Closed cell gaskets.
- Suitable for walk on ceilings, built to BS6399 Part 1
- 3 Hour Emergency as standard, DALI/Self test on request
- Fixed output as standard - DALI/Dimming on Request
- RAL9016M as standard, other colours on request.
- IP65 from the front, IP54 from the rear.

### Product Code Builder

Type	Description	Code
Product	ROVA	ROVA
Size	600x600mm	66
	600x1200mm	126
	38W (600x600)	38
Wattage	54W (600x600)	54
	54W (600x1200)	54
	90W (600x1200)	90
Optic	Toughened glass with opal.	TGC
	Toughened glass with prismatic	TGP
Colour Temperature	3000K	3K
	4000K	4K
Dimming Options	6000K	6K
	Fixed Output	FO
	Dali	A1
	DSI	A2
	Switch Dim	A3
Emergency	1-10v	A4
	Casambi	A5
	Standard 3 hour	EM3
	Self Test	EMS
	DALI/EMPRO	EMD

**Example Code:** ROVA-66-38-4K-A1-TGC-EM3



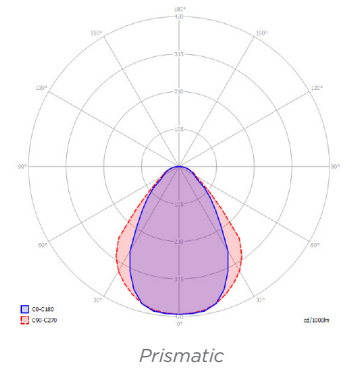
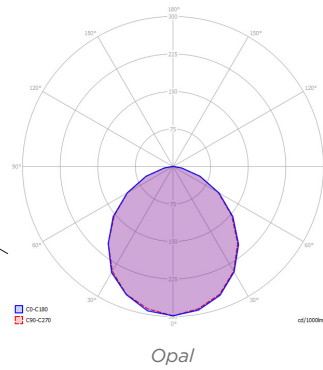
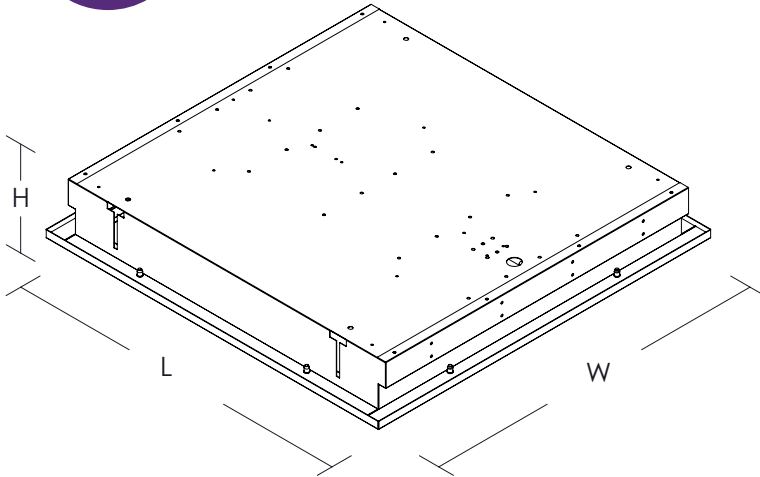
Rova 66 Clean room installation



Rova 126 Slab Ceiling installation.



# ROVA



Product	L x W x H (mm)	Ctt Watts	Luminaire / Lumens	LL / CW	Colour Temp	Ra	Colour Consistency	L70 / B10
ROVA-66-38-4K-XX-	600x600x130*	38	4500	118	4000K	>80	MacAdam 2	>70,000K
ROVA-66-45-4K-XX-	600x600x130*	45	5300	118	4000K	>80	MacAdam 2	>70,000K
ROVA-66-54-4K-XX-	600x600x130*	54	6370	118	4000K	>80	MacAdam 2	>70,000K
ROVA-126-54-4K-XX-	1200x600x130**	54	6370	118	4000K	>80	MacAdam 2	>70,000K
ROVA-126-90-4K-XX-	1200x600x130*	90	10600	118	4000K	>80	MacAdam 2	>70,000K

\*For 540x540 C/O

\*\*For 1140x540 C/