

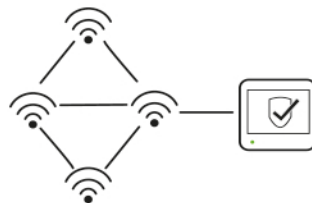


BLUETOOTH MESH WIRELESS EMERGENCY LIGHTING TEST SYSTEM

Advanced Emergency Lighting Test System

Sentinel

SentiLink



WIRELESS EMERGENCY LIGHTING TEST SYSTEM



Sentinel (Bluetooth Low Energy) is a standalone Emergency Lighting test system, providing testing and reporting to BS EN 62034 via a Bluetooth Mesh.

The system's simplicity means that the user can be assured that the Emergency Lighting installation is being routinely tested and monitored in accordance with BS EN 50172.

The design and size of the innovative full colour touch screen makes setting up test schedules or checking test results very simple.



“ **Sentinel** is a system comprising of three core elements: a control panel, Bluetooth Gateway modules and SureLink networking software. ”

Each **Sentinel** panel is capable of wireless connection of 128 devices. For larger installations, **SentiLink** software can be deployed to provide a fully scalable system.

Once commissioned, the **Sentinel** system will carry out function tests and duration tests automatically on scheduled dates and times. While everything is healthy the **Sentinel** screen will remain blank unless touched in which case it will show the 'tick' screen indicating all is well.

In the event of a failure during a test, or if a battery/charger problem occurs, the screen will automatically display a warning symbol and, if selected during commissioning, the integral warning buzzer will also sound.

When the screen is active, simple touch buttons are also enabled that allow easy access to any fault reports or a password protected engineer's menu.

Alternatively, a **SentiLink** enabled system can be configured to automatically notify a maintenance engineer of both the nature and location of any faults. These detailed system reports allow for a strategy of planned maintenance to be implemented.

- ✓ Complies with EN 62386 DALI WiFi standard
- ✓ Complies with EN 61347-2-11

PANEL



- ✓ Integral Bluetooth antennae
- ✓ Integral mains supply
- ✓ Two Bluetooth Mesh networks (2 x 64 devices)
- ✓ Commissioning made simple using Android App
- ✓ Automatic addressing of replacement gear
- ✓ Automatic fault indication to maintenance partner (optional)
- ✓ IP addressable
- ✓ Screen branding to order
- ✓ Simple operation
- ✓ Routine function and duration tests
- ✓ Detailed test results on screen
- ✓ Automatic fault indication
- ✓ Downloadable test data
- ✓ Fault buzzer (software enabled)
- ✓ Operates with multiple durations (60 mins, 90 mins, 180 mins etc)
- ✓ Surface or recessed mounting
- ✓ UK design, manufacture and software intellectual property

GATEWAY MODULE



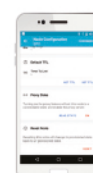
- ✓ Converts a DALI emergency luminaire into a Bluetooth luminaire
- ✓ Compact design (designed to fit in any emergency luminaire)
- ✓ Suitable for use in any DALI compatible emergency luminaire

SentiLink



- ✓ Encrypted networking
- ✓ Monitors and controls up to 50 panels

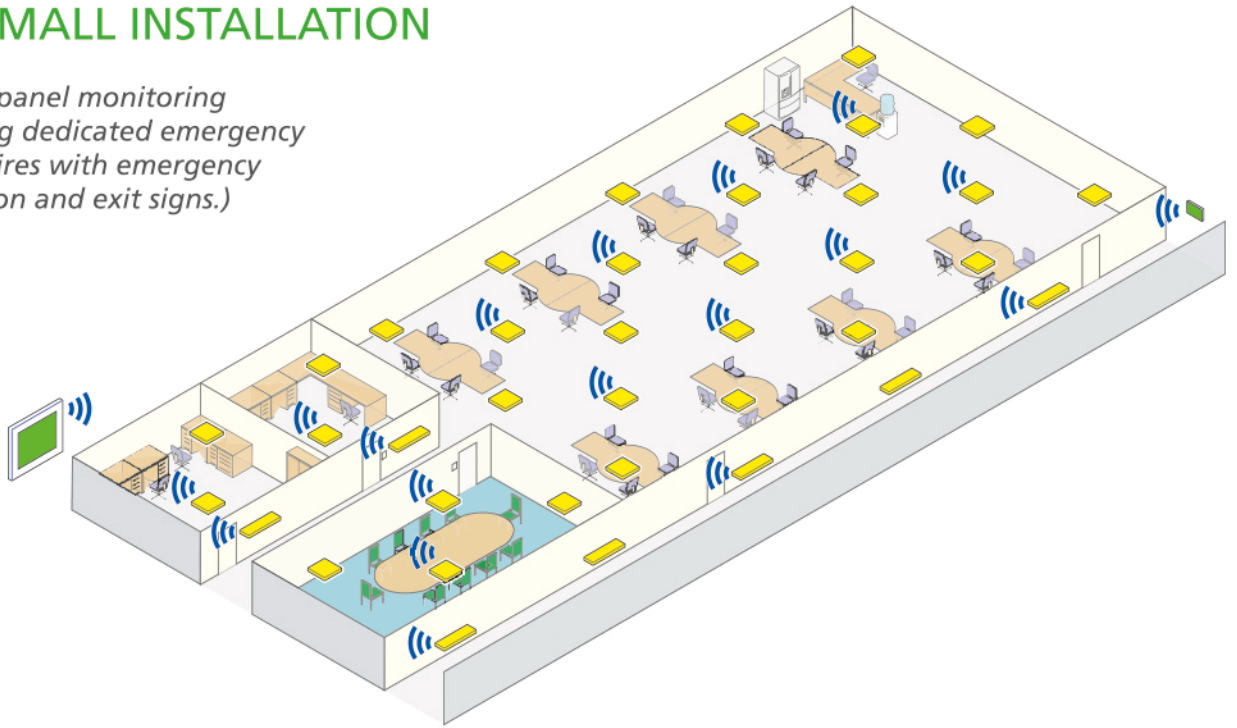
ANDROID APP



- ✓ Handy commissioning tool
- ✓ Convenient and portable

TYPICAL SMALL INSTALLATION

(Single **Sentinel** panel monitoring fixtures including dedicated emergency lighting, luminaires with emergency lighting operation and exit signs.)



OPERATIONAL FEATURES

Operational features of the **Sentinel** system include:

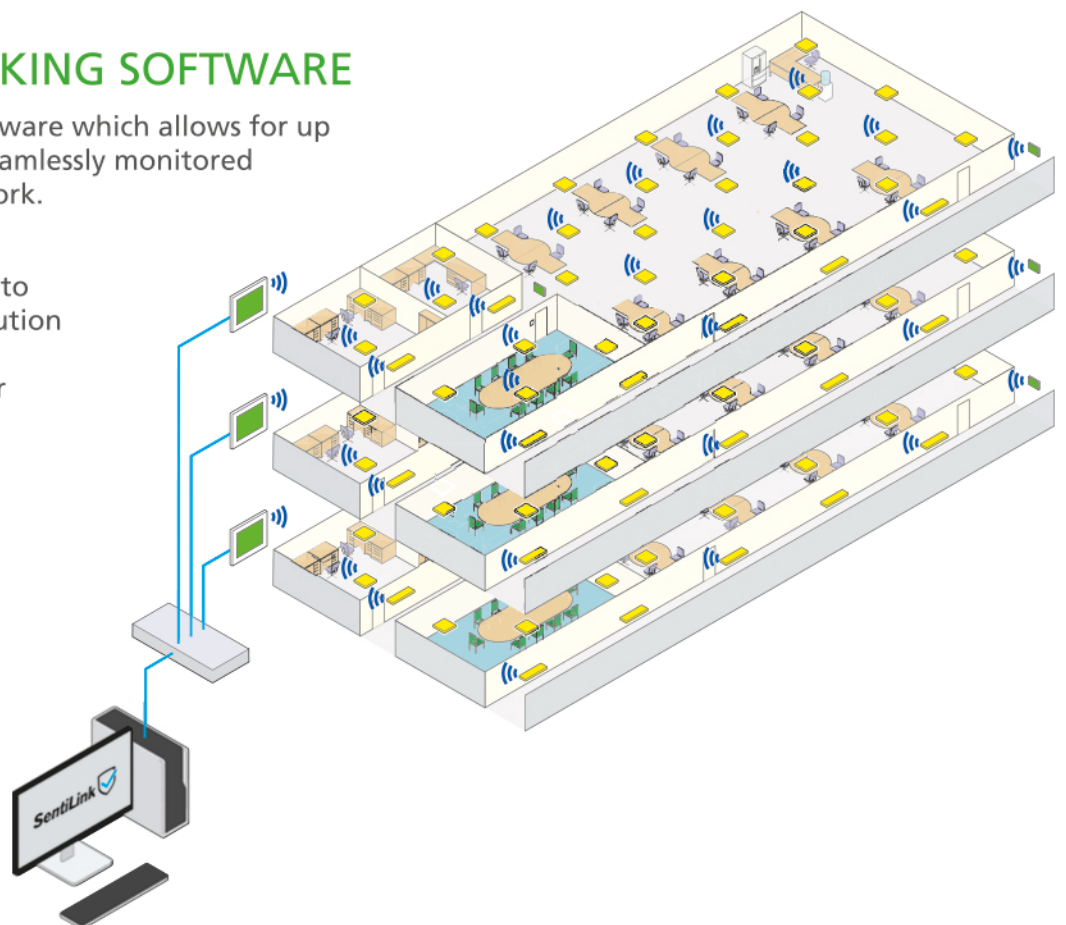
- ✓ Password protected active functions
- ✓ Commissioning data can be entered via the touch screen, a USB dongle or **Sentinel** software
- ✓ Devices can be addressed individually, by 'Network' or by 'Group'
- ✓ **Sentinel** will automatically find replacement devices during maintenance
- ✓ Automatic status notifications are logged in **Sentinel** non-volatile memory and can be downloaded by USB or **SentiLink** software
- ✓ **Sentinel** is IoT-ready

SureLink NETWORKING SOFTWARE

SentiLink is dedicated PC software which allows for up to 50 **Sentinel** panels to be seamlessly monitored and controlled across a network.

Sentinel has been developed to provide a single coherent solution to manage the emergency lighting installations of larger estates.

Sentinel also works with wired **Sentinel** systems.





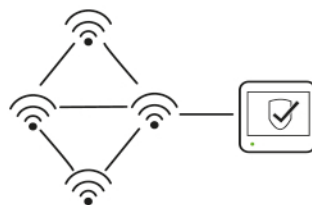
P&A Projects

Crown House, Plantation Rd, Burscough, Lancashire, L40 8JT

01704 891333

www.pandaprojects.co.uk

Sentinel 



SentiLink 