

3K 4K

IP20

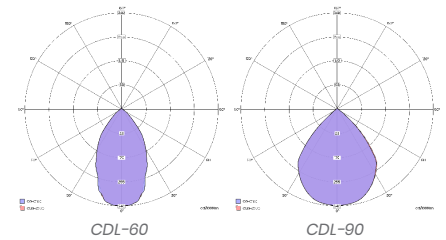
EM3

CDL

Recessed

CDL is a fixed output, cost effective, downlight solution complete with module, driver, reflector and white trim.

- Efficacy of up to 111 lm/W.
- LG7 Complaint, UGR<19 (Available on selected models)
- Colour temperatures: 3000°k, 4000°k.
- Colour Finishes: White trim only.
- Fixed output only: 1000lm, 2000lm & 3000lm, with corresponding diameters of 100mm, 150mm & 200mm.
- Beam options: 60° or 90°.
- Supplied with Integral Tridonic driver.
- Simple push and rotate tool free assembly.
- Emergency options: Standard 3hr.



Technical

Product	CDL
Mounting type	Recessed
Lumens	1000 - 3000 Lm
Efficacy	Up to 111 lm/W
Colour Temperature	Warm White (3K) Neutral White (4K)
Beam	60° Beam (UGR<19) 90° Beam
Control	Fixed output
Emergency	3 hour
Rendering	Ra80+
IP Rating	IP20
Safety Class	Class 1
MacAdam	SDCM 4
L70/B10	>50K

Luminaire Order Builder

CDL10 (100mm)

STEP 1. Select Current	STEP 2. Optics	STEP 3. CCT	STEP 4. Control	STEP 5. Finish	STEP 6. Emergency
25 255mA 1000 Lm - 10.2W	60 60° Degree beam	3K 3000K	FO Fixed Output	W RAL9016	- Not Available
	90 90° Degree beam	4K 4000K			

Example Code: CDL1025904KFOW

CDL15 (150mm)

STEP 1. Select Current	STEP 2. Optics	STEP 3. CCT	STEP 4. Control	STEP 5. Finish	STEP 6. Emergency
25 255mA 1000 Lm - 10.1W	60 60° Degree beam UGR<19	3K 3000K	FO Fixed Output	W RAL9016	E3 Standard 3 Hour
53 530mA 2000 Lm - 20.2W	90 90° Degree beam	4K 4000K			

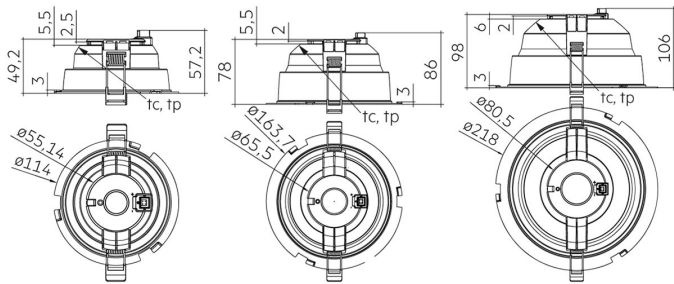
Example Code:CDL1525904KFOWE3

CDL20 (200mm)

STEP 1. Select Current	STEP 2. Optics	STEP 3. CCT	STEP 4. Control	STEP 5. Finish	STEP 6. Emergency
53 530mA 2000 Lm - 20.4W	60 60° Degree beam UGR<19	3K 3000K	FO Fixed Output	W RAL9016	E3 Standard 3 Hour
79 790mA 3000 Lm - 32W	90 90° Degree beam	4K 4000K			

All electrical and optical data subject to ±10% tolerances.
 Values based on 4000K Colour temperature.

Example Code: CDL2053604KFOWE3



Dimensions

DØ	H	Finish	Code	Colour Swatch
100-108	96.7*	White	White	
145-158	127.3*			
190-210	147.5*			

All dimensions are measured in millimetres (mm)
 * Dimensions Including driver
 Hole cut out size: 100mmØ, 150mmØ, 200mmØ

Ancillaries

60° Degree beam



90° Degree beam



White trim Ring



EM LED Indicator Holder



IP20

IP20
 Protection of fingers against access to hazardous parts, and protection against objects larger than 12.5mm



Safety Class
 Class 1 Safety chassis is connected to earth with a separate terminal, instead of via the mains cable



Warranty
 5 year Guarantee