

3K

4K

IP40



EM3

# HB2

## Suspended

HB2 is a linear high performance IP40 High bay luminaire, which is suitable for industrial applications. Precise optics and lighting control for racking and open areas. Suitable for mounting heights of 6 to 12 metres.

- Efficacy of up to 135 lm/W.
- Colour temperatures: 3000°k or 4000°k.
- Colour Finishes: White (9016), Black (9005) or Silver (9006). Other RAL colours, available on request.
- Optics: Six options available, 90° Wide beam as standard.
- Industry driver options: Fixed output or Dali dimming, for extended service life.
- Wireless control options: Casambi.
- Custom length Flex in Clear, Black or White flex are available.
- Options: Integrated High bay PIR sensor.
- Emergency options: Standard 3hr, Self-Test, Dali addressable or 3hr Dali Wireless Sentinel.

### Technical

Product	HB2
Mounting type	Suspended
Standard Length	1029mm
Lumen	10145 - 16908Lm
Efficacy	Upto 135 lm/W
Colour Temperature	Warm White (3K) Neutral White (4K)
Optics	High racking 60° Medium Beam 90° Wide Beam 110° Wide Beam Symmetrical 110° Opal Beam
Control	Industry DALI, Industry Fixed Output, Casambi,
Emergency	3 hour, DALI, Self-Test, DALI Wireless Sentinel
Rendering	Ra80+
IP Rating	IP40
Safety Class	Class 1
MacAdam	SDCM 3
L70/B10	>50K

# P&A HB2

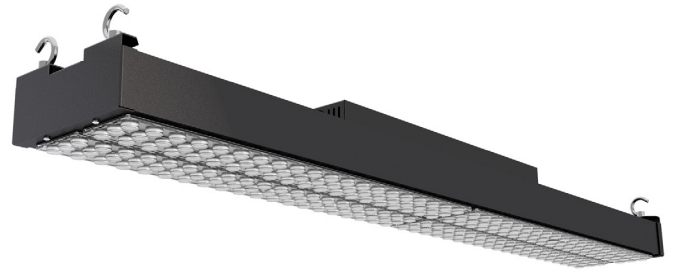
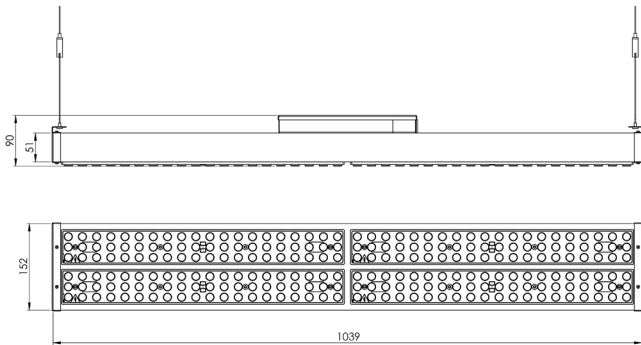
## Luminaire Order Builder

### HB2

STEP 1. Select Current	STEP 2. Optics	STEP 3. CCT	STEP 4. Control	STEP 5. Finish	STEP 6. Options	STEP 7. Emergency
<b>30</b> 300mA 10145 Lm - 75W  <b>35</b> 350mA 11836Lm - 87.5W  <b>40</b> 400mA 13526 Lm - 100W  <b>45</b> 450mA 15217 Lm - 112W  <b>50</b> 500mA 16908 Lm - 125W	<b>HR</b> High Rack beam  <b>60</b> 60° Medium beam  <b>90</b> 90° Wide beam  <b>110</b> 110° Extra Wide beam  <b>SY</b> Symmetrical retail beam  <b>O</b> Opal Diffused 110° beam	<b>3K</b> 3000K  <b>4K</b> 4000K	<b>A5</b> Casambi  <b>A6</b> Industry Fixed Output  <b>A7</b> Industry DALI	<b>W</b> RAL9016M  <b>B</b> RAL9005  <b>S</b> RAL9006  <b>Z</b> Custom	<b>PIR</b> High Bay PIR Sensor	<b>E3</b> Standard 3 Hour  <b>ED</b> DALI/EMPRO  <b>ES</b> Self-Test  <b>EW</b> 3 hour DALI Wireless Sentinel

All electrical and optical data subject to ±10% tolerances.  
Values based on 4000K Colour temperature and 90° Wide Beam.

Example Code: HB250904KA6WE3



#### Dimensions

L	W	H (o/A)	Finish	Code	Colour Switch
1039	152	90	White	9016	
			Black	9005	
			Silver	9006	
			Custom*	Custom*	

All dimensions are measured in millimetres (mm)

\*Custom Colours upon request



IP40  
Protection against solid objects over 1mm, e.g. wires and nails



Safety Class  
Class 1 Safety chassis is connected to earth with a separate terminal, instead of via the mains cable



Warranty  
5 year Guarantee



Crown House, Plantation Rd, Burscough, Lancashire, L40 8JT  
01704 891333  
sales@pandaprojects.co.uk  
www.pandaprojects.co.uk

Datasheet Code: PA-10741-0



BS EN60598-1:2015  
ISO 9001 Certification

